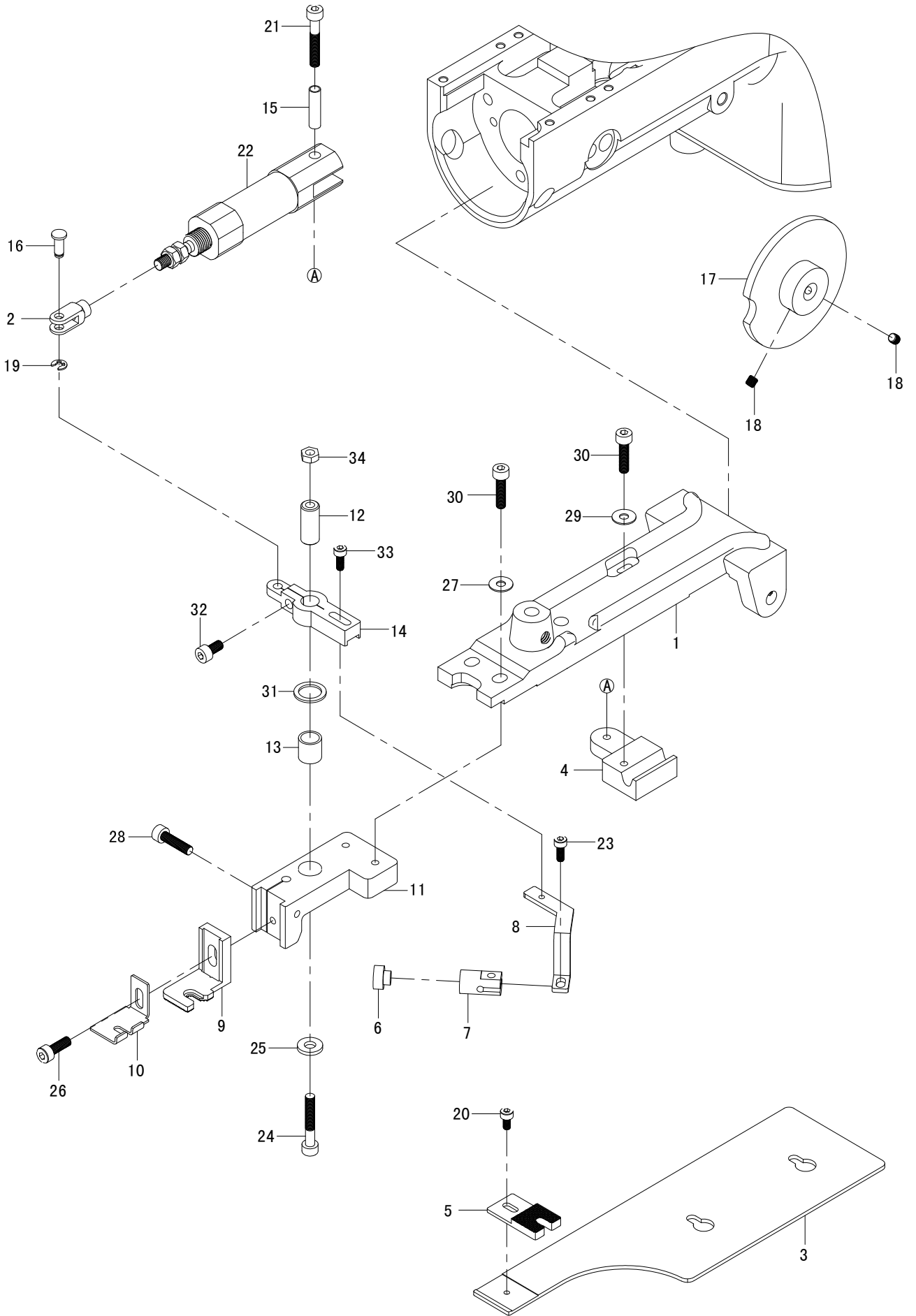


新钉立扣装置



新钉立扣装置

| 参照号 | 零部件序号 | 数量 | 零部件名称 | NAME OF PARTS | RM |
|-----|------------|----|-------------|---------------|--------|
| 1 | B0301001 | 1 | 钮夹支架 | | |
| 2 | B0301002 | 1 | 气缸接头 | | |
| 3 | B0301003 | 1 | 送料板 | | |
| 4 | B0301004 | 1 | 气缸安装块 | | |
| 5 | B0301005 | 1 | 放料台 | | |
| 6 | B0301006 | 1 | 扣夹盘 | | |
| 7 | B0301007 | 1 | 扣夹 | | |
| 8 | B0301008 | 1 | 扣夹旋转架 | | |
| 9 | B0301009 | 1 | 钮夹A | | |
| 10 | B0301010 | 1 | 钮夹B | | |
| 11 | B0301011 | 1 | 钮夹台 | | |
| 12 | B0301012 | 1 | 旋转轴 | | |
| 13 | B0301013 | 1 | 衬套 | | |
| 14 | B0301014 | 1 | 旋转支架 | | |
| 15 | B0301015 | 1 | 螺栓定位套 | | |
| 16 | B0301016 | 1 | 销子 | | |
| 17 | B0301017 | 1 | 感应轮 | | |
| 18 | CS08040401 | 2 | 内紧定螺钉M4X4 | | A13-12 |
| 19 | CS24030401 | 1 | 挡圈 E3 | | D35-19 |
| 20 | CS09030602 | 1 | 内六角螺栓M3X6 | | A29-24 |
| 21 | CS09042502 | 1 | 内六角螺栓M4X25 | | G15-64 |
| 22 | D0106005 | 1 | 气缸CJ2D16-15 | | D13-5 |
| 23 | CS09030802 | 1 | 内六角螺栓M3X8 | | E35-58 |
| 24 | CS09042502 | 1 | 内六角螺栓M4X25 | | G15-64 |
| 25 | CS21040802 | 1 | 平垫圈M4 | | E43-17 |
| 26 | CS09041202 | 1 | 内六角螺栓M4X12 | | E27-14 |
| 27 | CS21040832 | 2 | 平垫圈M4 | | A25-22 |
| 28 | CS09041602 | 1 | 内六角螺栓M4X16 | | A3-29 |
| 29 | CS21040832 | 1 | 平垫圈M4 | | A25-22 |
| 30 | CS09041602 | 3 | 内六角螺栓M4X16 | | A3-29 |
| 31 | CS21080404 | 1 | 衬套垫 | | |
| 32 | CS09040802 | 1 | 内六角螺栓M4X8 | | A7-72 |
| 33 | CS09030802 | 1 | 内六角螺栓M3X8 | | E35-58 |
| 34 | CS13043002 | 1 | 六角螺母M4 | | A27-4 |